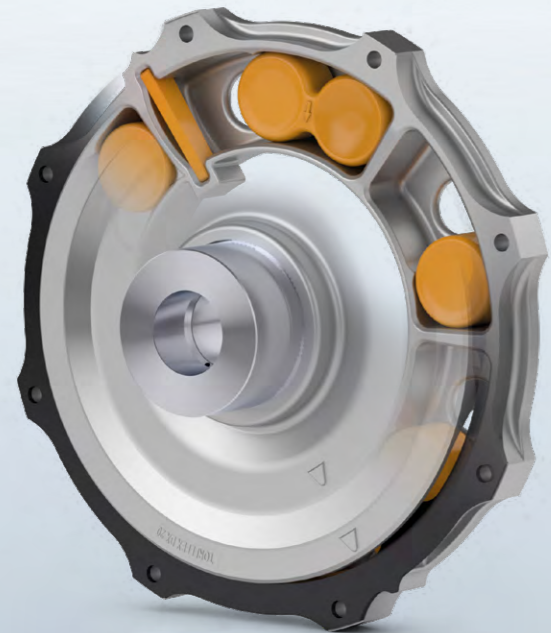


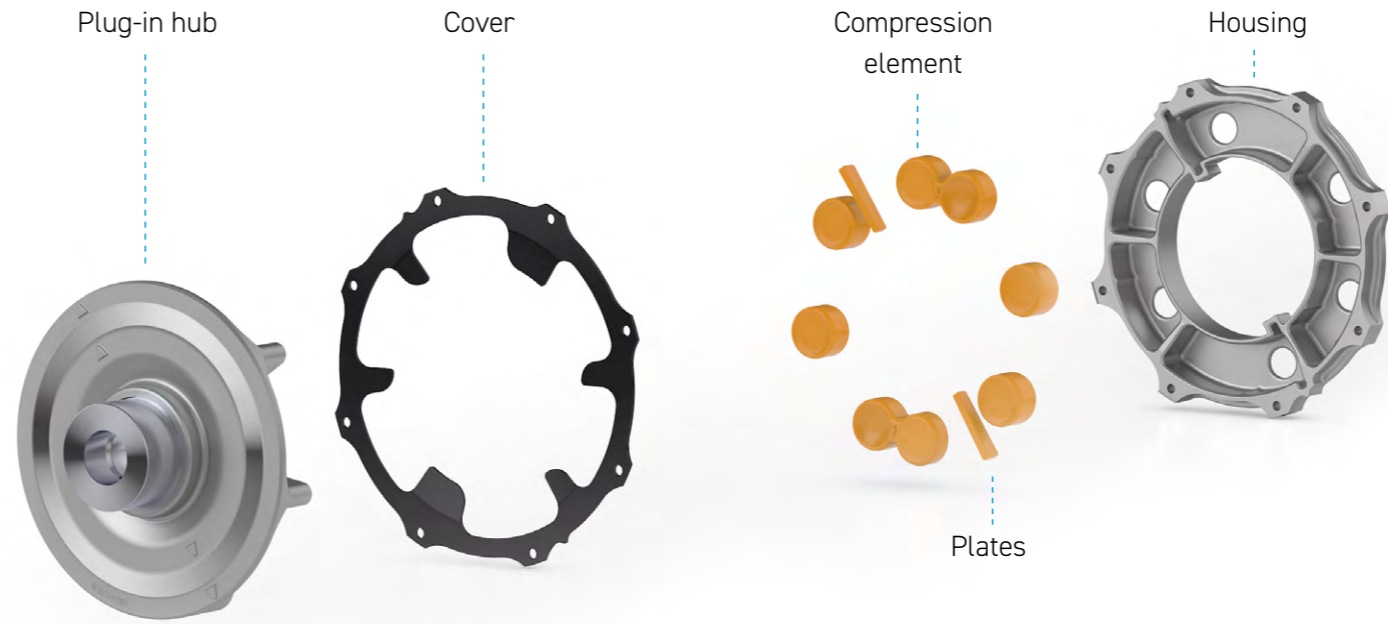
Marine and Industrial Solutions

TORFLEX DX

Two Stage Coupling



COMPACT COUPLING WITH INTEGRATED COMING HOME DEVICE



- ➔ Optimized 2-stage torsional stiffness characteristics for optimum system tuning
- ➔ Blind fit assembly

- ➔ Simple and time-saving installation without special tools thanks to pre-clamped compression elements
- ➔ Compression elements for the highest loads and resistance regarding overload

- ➔ Lowest permanent deformation and abrasion thanks to optimized compression elements
- ➔ Constant properties over a long period of time



TORFLEX DX

COMPACT COUPLING WITH INTEGRATED COMING HOME DEVICE

The **TORFLEX DX** is a compact two stage coupling with integrated coming home device. The **TORFLEX DX** is the solution for new gearboxes which need less space with higher torque transmission. The assembly is quite easy due to pre-clamped elements, which guarantees the positioning.

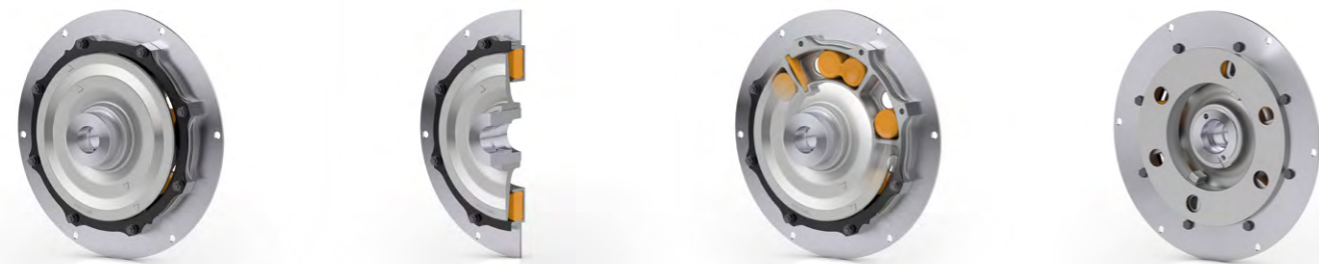
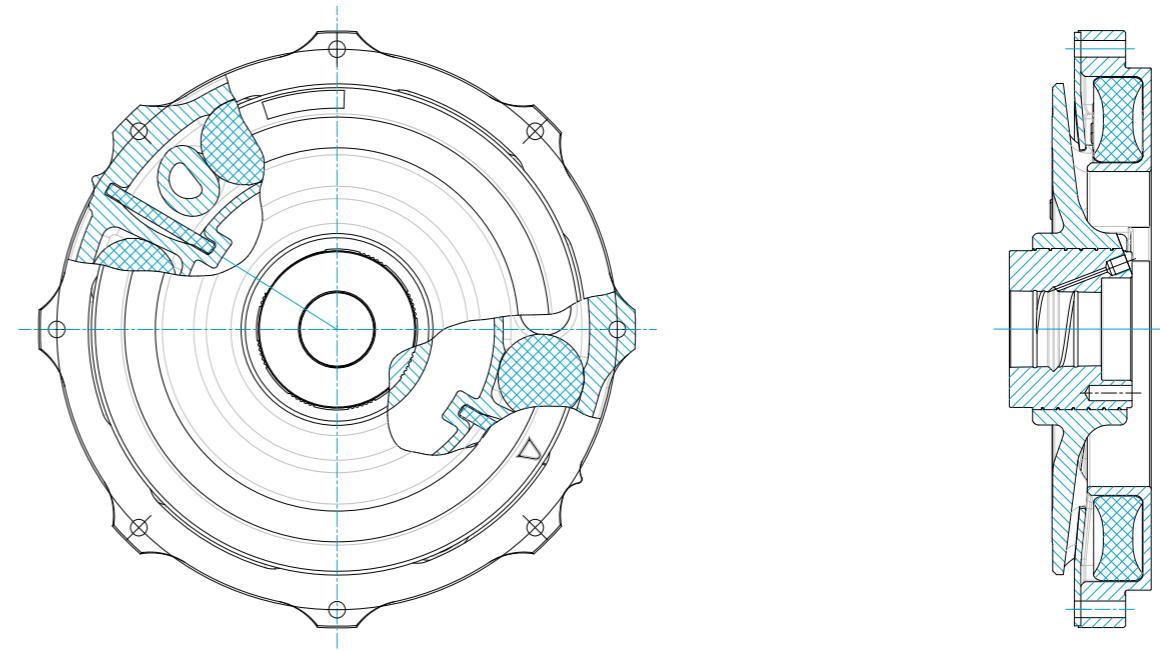
The stageless coupling permits an optimal torsional stiffness characteristic over the complete torque range.

The acoustic behavior is excellent. The pressure bodies are developed for lowest permanent deformation and abrasion to keep constant characteristics. It has been designed and developed for installations on pleasure boats and work boats where high comfort on board is considered a must.

DESCRIPTION AND DATA

The new **TORFLEX DX 20** is a two-stage compression loaded coupling for pleasure crafts and work boats up to a torque of 4 kNm. The first stage is required for idling and low loads, with the second stage automatically and smoothly coming into action when higher torque is required.

The **TORFLEX DX 20** is available for SAE 14" and 18" flywheel connection. To complete the portfolio, the **TORFLEX DX 33** with SAE 18" and 21" flywheel connection will follow soon.



BLIND FIT ASSEMBLY

Easy and time saving assembly with pre-clamped elements



APPLICATIONS

- ⊕ Pleasure boats
- ⊕ Work boats

BENEFITS

- ⊕ Short installation length
- ⊕ Blind fit Installation
- ⊕ Best possible comfort
- ⊕ Easy and fast assembling without additional tools
- ⊕ Optimized system tuning for various applications
- ⊕ Fail-safe Design
- ⊕ High wear resistance

Size code	Permissible values						
	T_{KN} Max. Nominal Torque [kNm]	n_{Kmax} Rotational Speed [1/min]	$C_{tdyn} 25\%$ Dynamic torsional stiffness [kNm/rad]	$C_{tdyn} 25\%$ Dynamic torsional stiffness [kNm/rad]	$C_{tdyn} 50\%$ Dynamic torsional stiffness [kNm/rad]	$C_{tdyn} 75\%$ Dynamic torsional stiffness [kNm/rad]	$C_{tdyn} 100\%$ Dynamic torsional stiffness [kNm/rad]
Torflex DX 20	4	2700	12	40	130	170	210